

# Accessories, Universal

## Technical Data

<b>Material</b>	Stainless steel, W1.4404/AISI 316 L
<b>Media pressure</b>	PN16
<b>Insulating material</b>	PEEK
<b>Cleaning</b>	SIP and CIP
<b>Operating temperature</b>	Metal: -20...600°C PEEK: -20...250°C
<b>Marking</b>	A mark or a leak hole indicates the final gland or plug position, when the instrument has been mounted.
<b>3.1 certificate</b>	Optional
<b>Approval</b>	3A
<b>Compliance with</b>	EHEDG and FDA

## Disposal of product and packing

According to national laws or by returning to Baumer

## Syntax of the Type Number

The type number for Accessories is: xx(x)0Yz-v

X: Product name

Y: 2 = Inner thread G1/2"

3 = Inner thread M12

5 = Inner thread G1

Z: Number

V: Version

## Examples



## Accessories for (samples):



**Baumer**

## Technical Data






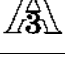
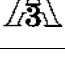
Product	Type No.	Inner Thread	Outer Diam.	DN (DIN)	DN (ISO)	Description	Drawing
	CAM020-505	G1/2	50.5	25/40	25/38	Clamp DIN32676/ISO2852 Incl. EPDM gasket	1
	CAM020-640	G1/2	64	50	51	Clamp DIN32676/ISO2852 Incl. EPDM gasket	1
	CAM023-505	G1/2	50.5	25/40	25/38	Clamp DIN32676/ISO2852 Incl. EPDM gasket, {3}	1
	CAM023-640	G1/2	64	50	51	Clamp DIN32676/ISO2852 Incl. EPDM gasket, {3}	1
	CAM030-505	M12	50.5	25/40	25/38	Clamp DIN32676/ISO2852 Incl. EPDM gasket	2
	CAM030-640	M12	64	50	51	Clamp DIN32676/ISO2852 Incl. EPDM gasket	2
	CAM033-505	M12	50.5	25/40	25/38	Clamp DIN32676/ISO2852 Incl. EPDM gasket, {3}	2
	CAM033-640	M12	64	50	51	Clamp DIN32676/ISO2852 Incl. EPDM gasket, {3}	2
	CAM050-505	G1	50.5	25/40	25/38	Clamp DIN32676/ISO2852 Incl. EPDM gasket	3
	CAM050-640	G1	64	50	51	Clamp DIN32676/ISO2852 Incl. EPDM gasket	3
	CAM053-505	G1	50.5	25/40	25/38	Clamp DIN32676/ISO2852 Incl. EPDM gasket, {3}	3
	CAM053-640	G1	64	50	51	Clamp DIN32676/ISO2852 Incl. EPDM gasket {3}	3
	VAM020	G1/2	84	40/50		GEA Tuchenhagen Varivent, Type N incl. O-ring	4
	VAM023	G1/2	84	40/50		GEA Tuchenhagen Varivent, Type N incl. O-ring, {3}	4
	VAM030	M12	84	40/50		GEA Tuchenhagen Varivent, Type N incl. O-ring	5
	VAM050	G1	84	40/50		GEA Tuchenhagen Varivent, Type N incl. O-ring	6
	VAM053	G1	84	40/50		GEA Tuchenhagen Varivent, Type N incl. O-ring, {3}	6
	MAM020-025	G1/2	44	25		DIN11851 incl. rotating female nut and gasket	7
	MAM020-040	G1/2	56	40		DIN11851 incl. rotating female nut and gasket	7
	MAM020-050	G1/2	68	50		DIN11851 incl. rotating female nut and gasket	7

## Technical Data

Product	Type No.	Inner Thread	Outer Diam.	DN (DIN)	DN (ISO)	Description	Drawing
	MAM030-025	M12	44	25		DIN11851 incl. rotating female nut and gasket	8
	MAM030-040	M12	56	40		DIN11851 incl. rotating female nut and gasket	8
	MAM030-050	M12	68	50		DIN11851 incl. rotating female nut and gasket	8
	MAM050-032	G1	50	32		DIN11851 incl. rotating female nut and gasket	9
	MAM050-040	G1	56	40		DIN11851 incl. rotating female nut and gasket	9
	MAM050-050	G1	68	50		DIN11851 incl. rotating female nut and gasket	9
	MAM050-065	G1	86	65		DIN11851 incl. rotating female nut and gasket	9
	MAM050-100	G1	121	100		DIN11851 incl. rotating female nut and gasket	9
	LAM020-1	G1/2	G1			Hygienic adapter, outer thread	17
	LAM020-2	G1/2	46			Hygienic adapter, incl. Rd52 rotating female nut and O-ring	18
	SAM020-051-1	G1/2	65			Hygienic adapter SMS1145, incl. rotating female nut	10
	SAM050-038-1	G1	55			Hygienic adapter SMS1145, incl. rotating female nut	11
	SAM050-051-1	G1	65			Hygienic adapter SMS1145, incl. rotating female nut	12
	RAM020-1	G1/2	G1			Hygienic adapter. Fits in PM05x/RAM05x.	13
	RAM020-2	G1/2	G1			Hygienic adapter. Fits standard G1 non-hygienic thread	14
	RAM030-3	M12	G1/2			Hygienic adapter. Fits standard G1/2 non-hygienic thread.	15
	RAM050	G1	G1 1/2			Hygienic adapter. Fits standard G1 1/2 non-hygienic thread.	16
	PM020	G1/2	30			Hygienic welding sleeve.	19
	PM023	G1/2	30			Hygienic welding sleeve. {3}	19

## Technical Data

	PM021	G1/2	30/45			Hygienic welding sleeve with shoulder.	20
	PM022-1	G1/2	29			Hygienic welding sleeve with lip. For pipes DN25...50	21
	PM022-2	G1/2	30			Hygienic welding sleeve with lip. For pipes DN65...150	21
	PM025	G1/2	Sø35			Hygienic spherical welding sleeve.	22
	PM031	M12	25			Hygienic welding sleeve with shoulder.	23
	PM033	M12	25			Hygienic welding sleeve with shoulder. {3}	23
	PM032-1	M12	19			Hygienic welding sleeve with lip. For pipes DN25...50	24
	PM032-2	M12	20			Hygienic welding sleeve with lip. For pipes DN65...150	24
	PM035	M12	Sø25			Hygienic spherical welding sleeve.	25
	PM050	G1	50			Hygienic welding sleeve.	26
	PM053	G1	50			Hygienic welding sleeve. {3}	26
	PM052-1	G1	40			Hygienic welding sleeve with lip. For pipes DN40...50	27
	PM052-2	G1	41			Hygienic welding sleeve with lip. For pipes DN65...150.	27
	PM200	G1/2	30			Welding sleeve for TE1 surface mounted temperature sensor.	28

Product	Type No.	Inner Thread	Outer Diam.	DN (DIN)	DN (ISO)	Description	Drawing
	PS020	-	G1/2			Hygienic blind plug	29
	PS030	-	M12			Hygienic blind plug	30
	PS050	-	G1			Hygienic blind plug	31
	8126-990	-	62			O-Ring for VAM020, VAM050, TE1 varivent	
	8126-987	-	19			O-Ring for TE1 3A/DN38	
	8126-985	-	52			Gasket for CAM020-505, CAM030-505 CAM050-505, TE1 clamp DN38	
	8126-986	-	66			Gasket for CAM020-640, CAM030-640 CAM050-640, TE1 clamp DN51	
	8126-979	-	62			O-Ring for VAM023, VAM053, TE1 varivent, {3}	
	8126-982	-	19			O-Ring for TE1 3A/DN38, {3}	
	8126-980	-	52			Gasket for CAM023-505, CAM033-505 CAM053-505, TE1 clamp DN38, {3}	
	8126-981	-	66			Gasket for CAM023-640, CAM033-640 CAM053-640, TE1 clamp DN51, {3}	
<b>Material certificate 3.1</b> Type no. 5509-227							
<b>Material other than W1.4404</b> On request							

Note {3}




3A Approved.

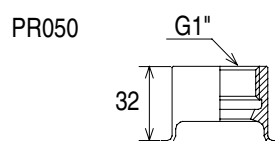
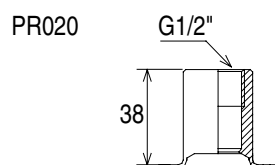
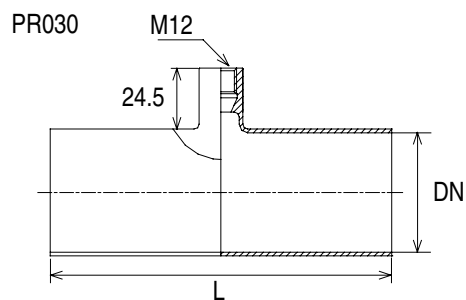
The 3A approval is valid only for counter parts mounted with a 3A approved version of the products ISL, LSK, LSM and LSP.

The product and counter part shall be installed according to the guidelines given in the products installation manual using a 3A approved O-ring or gasket if relevant.

The 3A approved products fulfill the FDA demands and follow the EHEDG guidelines regarding design, materials and finishing.

## Technical Data

Product		DN (DIN)	Wall thickness	L	Temperature Sensor length {2}
	PR020-025-x {1}	25	1.6	100	15
	PR020-040-x	40	1.6	120	22
	PR020-050-x	50	1.6	140	29
	PR020-065-x	65	2	160	38
	PR020-080-x	80	2	180	46
	PR020-100-x	100	2	200	55
	PR030-015-x	15	1.6	70	10
	PR030-025-x	25	1.6	100	15
	PR030-040-x	40	1.6	120	22
	PR030-050-x	50	1.6	140	29
	PR030-065-x	65	2	160	38
	PR030-080-x	80	2	180	46
	PR030-100-x	100	2	200	55
	PR050-040-x	40	1.6	120	22
	PR050-050-x	50	1.6	140	29
	PR050-065-x	65	2	160	38
	PR050-080-x	80	2	180	46
	PR050-100-x	100	2	200	55

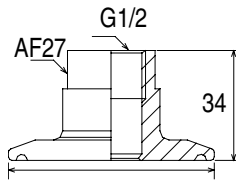


Note {1}  
 PRyyy-yyy-x.  
 The x indicates the surface treatment.  
 -1 is glas bead blast  
 -2 is electro polished

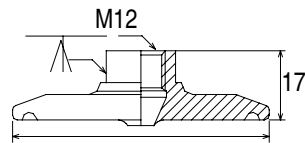
Note {2}  
 The indicated temperature sensor length is  
 for optimal measurements in the center of  
 the pipe.

## Dimensional Drawings

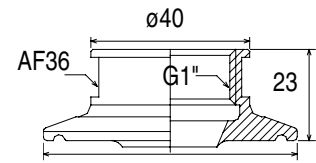
[mm]



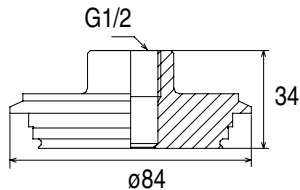
- 1) CAM023-505:  $\phi 50.5$
- 1) CAM023-640:  $\phi 64$



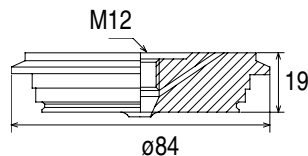
- 2) CAM033-505:  $\phi 50.5$
- 2) CAM033-640:  $\phi 64$



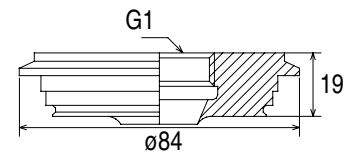
- 3) CAM053-505:  $\phi 50.5$
- 3) CAM053-640:  $\phi 64$



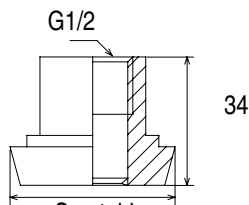
- 4) VAM023



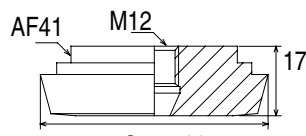
- 5) VAM033



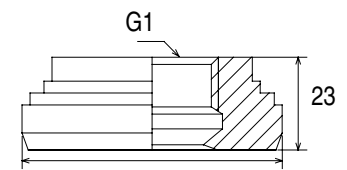
- 6) VAM053



- 7) MAM020

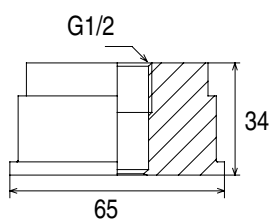


- 8) MAM030

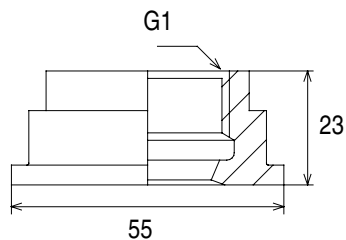


- 9) MAM050

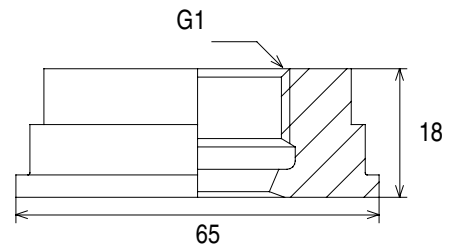
MAM and SAM connections are shown without the rotating female nut



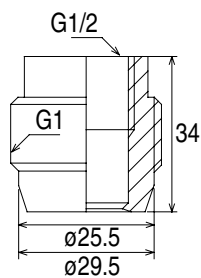
- 10) SAM020-051-1



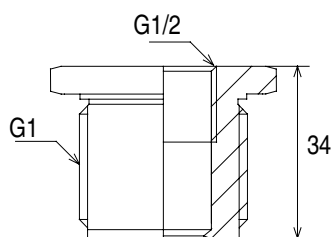
- 11) SAM050-038-1



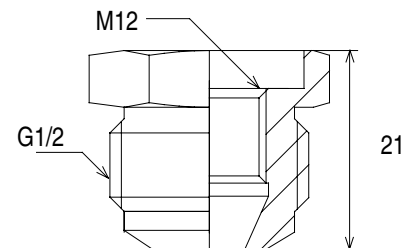
- 12) SAM050-051-1



- 13) RAM020-1

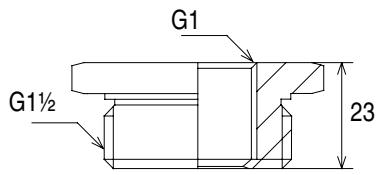


- 14) RAM020-2

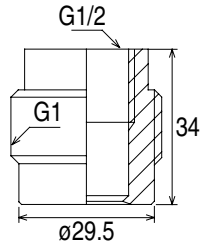


- 15) RAM030-3

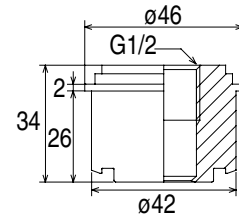
## Dimensional Drawings



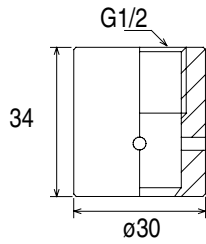
16) RAM050



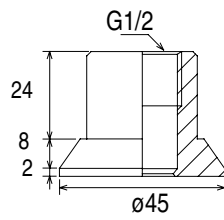
17) LAM020-1



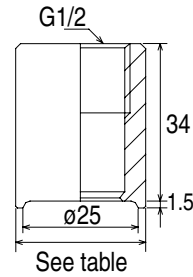
18) LAM020-2



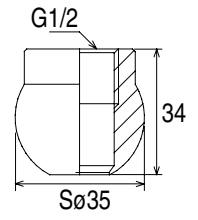
19) PM023



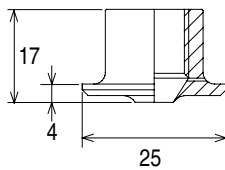
20) PM021



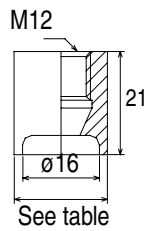
21) PM022



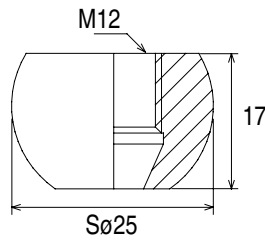
22) PM025



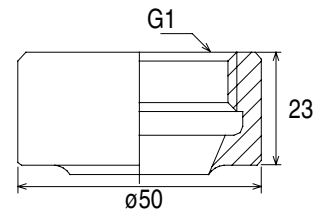
23) PM033



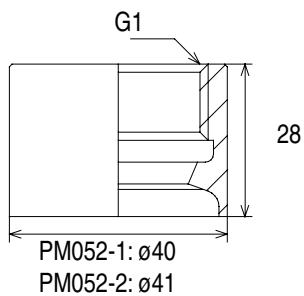
24) PM032



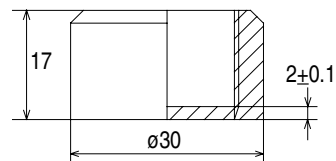
25) PM035



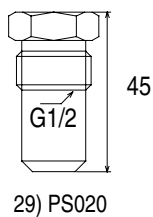
26) PM053



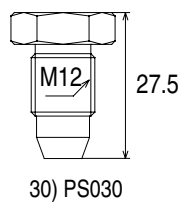
27) PM052



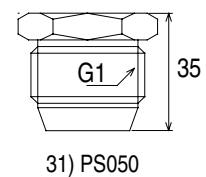
28) PM200



29) PS020



30) PS030



31) PS050

UK/2007-12-17 This data sheet may only be reproduced in full.